



Car Care Solutions!



ADDITIVES | CAR CARE PRODUCTS | TECHNICAL AEROSOLS | LUBRICANTS | EQUIPMENTS



MOTO TECHNOLOGY is in Car Care ,lubricants , Engine Oils, Marine Products and other after sales automotive products we have got complete range of car , two wheeler and marine products. We offer both product and services to our clients. Our Vision is to take the business to new way of working style and to provide more products and services to the Automobile market.

we are offering our customers almost all automobile & associated products under one roof so that they don't have to spend time on searching the products in the market and also keeping the quality of products up to the standard. We have products for small workshops to big dealers and our prices are competitive and we offer products and services at customers door steps. All our business decisions are policy driven and so we have uniformity in prices and quality.

- Constantly dedicated towards doing the right thing for our customers.
- Taking care to ensure that we are able to provide what our customer need.
- Doing everything possible for our customers to ensure that each and every spend on our products must be full of satisfaction.
- We operate with unquestionable integrity.
- We foster an environment for continuous learning.





CONTENTS

ADDITIVES & FLUSHES

Page 4

Fuel Injection Cleaner
Speed Up Gasoline
Inline Petrol System Cleaner
Super Diesel Additives
Speed up Diesel
Inline Diesel System Cleaner

ADDITIVES & FLUSHES

Page 5

Oil Treatment
Oil Smoke Stop
Engine Oil Flush
Radiator Additive Sealant
Radiator Flush
EGR Cleaner

Page 6

Gear Oil Additive
Air Intake Cleaner
Two Wheeler Fuel Additives
Two wheeler Oil Additive
Two Wheeler Engine Oil

CABIN CARE

Page 8

Clima Fresh
Odor Killer

Technical Aerosols

Page10

Rust Out
Window Dresser
Multi Purpose Spray M4
Brake Lining Cleaner
Throttle / Choke Air Intake Cleaner
Paint Touch Up Spray

Exchanger

Page11

Chain Lube
V-Belt Spray
Tacky Lube Spray
Chain Cleaning Spray
Battery Terminal Spray
Electrical Contact Cleaner

Page 12

Cockpit Bright
Tyre Alloy Foam
Tar Remover
Glass Foam Cleaner
Tree Resin Remover
Black Matt & Gloss Spray

Page 13

Engine Gloss (PU Coating)
Silencer / Silicon Spray
Instant Foam Cleaner
Cavity Wax
Spray Coat
Anti Rat Treatment

CAR CARE

Page 15

Pre Paint Cleaner
Paint Surface Protection
Scratch Remover
Poly Glaze

Page 16

Vehicle Interior Cleaner
Engine Gloss PU Coating
Premium Dash / Tyre Polish

Page 17

Dash Board Tyre Polish
Car Wash Shampoo

Page 18

Gloss Paint Sealant
Solid Wax
Dry Wash

Page 19

One for all Deep Treatment
Window Cleaner
Engine De-Greaser

Page 20

Engine care
Glass Water Repellent
Premium Rubbing Polish

Page 21

Crema Paste Wax
Rubber Care
Wheel Rim Cleaner

Page 22

Head Lamp Polisher & Restorer
Carnuba Car Wax
Chrome Polish / Car Logo

Page 23

Ultra Shine
Cream Polish
All Purpose Clean & Shine
Micro Fibre Cloth

Page 24

Spray Polish
Plastic Shine Treatment
Rubbing Compound

Page 25

Instant Foam Cleaner
Anti-Rat Cleaner
Car Perfume
All Purpose Clean & Shine
Tyre Shine
Glass Cleaner

CORROSION PROTECTION

Page 26

Underseal Protection
Under Coat Resin Base
Anti Corrosive Treatment

CORROSION PROTECTION

Page 28

Cavity Protection
Underseal Transparent
Silencer / Silicon Spray

Page 29

DAINTING & PAINTING

Automotive Masking Tape
Masking Film
Decorative Masking Tape
Compounding Wool Pads
Value Masking Tape
Foam Pad
Masking Paper
Automotive Sealant

Page 30

Dry Sanding Sheet & Rolls
Masking Foam
Dry Sanding Grip Discs
Dry Guide Coat
Abrasive Sanding Discs
Trim Masking Tape
Water Proof Paper
Dust Extraction Hand Blocks

Page 31

Sound Deadening Pads
Electrical Polisher Kit
Dust Extraction Unit
Airvantage Orbital Sander
Prima Orbit Sanders
Dual Action Buffer
3" Angle Polisher
Backup Pads

Page 32

Transit Protection Tape
Foaming Dry Wash
Key Benefits
Black Out Tape
Key ingredients
Duct Tape
Foaming Dry Wash
Diecut / Large Area Masking

CAR CARE

Page 34

Cockpit care
Wash & Wax Shampoo
Tyre Shine

Page 35

Liquid Polish
Multi Purpose Polish
Spray Wax Polish

Page 36

Windowscreen Clean Super
Anti Corrosive Treatment
Anti Corrosive Water Base Black

MOTOR OILS

Page 38

Premium Gold
Motor Gold
Power Stering

Page 39

80W-90
15W-40
20W-50
10W-40
Radiator Coolant
5W-30

Page 40

Fully Synthetic Oil
Semi Synthetic oil 5W-40
Fully Synthetic Oil OW-40

Page 41

Dot-4
Multi Premium Grease
Battery Water

EQUIPMENTS

Page 43

Air Venturi Tools
Cooling Systems Tool
oil filter tools
carbon cleaning / engine flush
Waste oil Handling
Brake Service
Oil Dispenser
Transmission
Part Cleaner / Hyegine
Power Steering
Body Coating
Brake Service
Platic Auto Body Repair

MARINE PRODUCTS

Page 48

Oil Spil Dispersant
Descaling Liquid (Scale Remover)
Motor Winding Cleaner



ADDITIVES & FLUSHES





ADDITIVES & FLUSHES



FUEL INJECTOR CLEANER

Description: Fuel Injection Cleaner is a highly effective combination of active agents for cleaning and protection. This Product is formulated in accordance with the latest standard of fuel and additive technology and meets the Requirement of today's engines, fuels and running conditions. Suitable for all gasoline fuel injection systems such as K, KE and L-jetronic systems etc.

Application: For Rectifying problem such as difficulties with starting, irregular idling, poor throttle response, performance losses, surges due to lean mixture and poor exhaust values caused by contaminated injection systems. Repeat treatment if problem reoccurs. Suitable for all gasoline injection systems. One 300ml can is sufficient for up to 70 ltr of fuel. This product is effective over 2000 km injection. Cleaner can be mixed with fuel at any time since mixing is spontaneous.

PART NO	CONTENTS	UNITS IN CARTON
ICCCC71	300ML	20



INLINE PETROL SYSTEM CLEANER

Description: In-Line intensive Petrol System cleaner is a ready -to-use highly effective combination of additives for cleaning all petrol injection systems such as K, KE, Ljetronic and formulated for use in jet clean units.

Application: Suitable for all petrol injection systems. For eliminating difficulties with starting idling, poor throttle response, and performance losses, lean surging and high pollution values in the exhaust caused by contaminated injection systems place automatically.

PART NO	CONTENTS	UNITS IN CARTON
IPSCC90	300ML	20



SPEED UP DIESEL

Description: Speed up diesel is a new diesel fuel additive for combustion improvement and the faster acceleration associated with it, above all in partial load range. Fully compatible with all conventional diesel and biodiesel fuels speed up diesel considerably improves vehicle acceleration.

Application: Add to diesel fuel, especially for vehicle diesel engines as well as suitable for fast vans. For the improvement of vehicle acceleration and smooth operation. One 300ml can is sufficient for max. 60 liters of diesel fuel. Mix the contents of the can with the diesel fuel. Mixing also takes place automatically

PART NO	CONTENTS	UNITS IN CARTON
SUCCC72	300ML	20



SPEED UP GASOLINE

Description: Speed up is a state of the art, ash -free fuel additive for improving combustion and acceleration in partial load range. Compatible with all gasoline and additive qualities. Speed up considerably improves vehicle acceleration.

Application: Used as an additive in the fuel of all 2 stroke and 4- stroke gasoline engines, especially for motor vehicle engines. Also can be used in two-wheeled vehicles. For the improvement of vehicle acceleration and smooth operation. One 300 ml can is sufficient for max.70 liters of fuel. Mix the contents of the can with the fuel. Mixing takes place automatically.

PART NO	CONTENTS	UNITS IN CARTON
SUCCC03	300ML	20



SUPER DIESEL ADDITIVE

Description: Super diesel additive contains a mixture of agents with cleaning, dispersing, material -protection and cetan -number increasing properties which has been formulated for today's engines, fuels and running conditions. The resulting lubricity improver provides better lubricity for diesel fuels low in sulphur. Due to the increased ignition performance, the fuel shows better combustion behavior when the engine is cold and the pollution from odours in the exhaust gases is reduced suitable for all diesel engines and diesel fuels.

Application: Added to diesel fuel for all diesel engines particularly in modern high pressure injection such as common rail and pumped jet fuel injection engines in passenger and commercial motor vehicles, tractor, construction machinery and stationary engines ideally suitable for preserving engines when decommissioned for long periods under extreme conditions. One 300 ml can of the product is sufficient to treat 60 liters of diesel fuel. To keep the injectors clean and for corrosion protection, add super diesel additive in passenger vehicle diesel fuel tank every 2,000km.

PART NO	CONTENTS	UNITS IN CARTON
1372	300ML	20



INLINE DIESEL SYSTEM CLEANER

Description: Inline Diesel System Cleaner contains a highly effective cleaning combination of additives formulated for rapid and cost -effective cleaning of disruptive deposits in the fuel systems of diesel engines. The special additives guarantee corrosion protection and protection and increase ignition performances.

Application: For rectifying problems or for preventive use and cleaning of the fuel system in conjunction with the Decarb unit. For all diesel vehicles, including common rail and pumped-jet fuel injection. To clean, fill the De-cab unit part no.001 with 300ml in line Diesel system cleaner. Further instructions on use are given in the instructions for the De-carb unit

PART NO	CONTENTS	UNITS IN CARTON
1404	300ML	20



ADDITIVES & FLUSHES



OIL TREATMENT

Description: Oil Treatment is a multi functional high performance additive for reducing friction and wear and stabilizing viscosity. It protects engine oil against viscosity loss even under the harshest conditions and protects the engine against wear. Oil Treatment is based on the latest additive technology and is compatible with all synthetic and mineral engine oils.

Application: For all gasoline and diesel engines in new and used cars .Can contents (300ml) is sufficient for maximum 5 liter of engine oil. After adding to the engine oil, allow the engine to run warm. The product can be added at any time.

PART NO	CONTENTS	UNITS IN CARTON
OTCCC83	300ML	20



ENGINE OIL FLUSH

Description: : Engine Flush is a specially formulated combination of additives and carrier fluid in combination with the carrier fluid the highly effective detergent and dispersant additives dissolve sludge and lacquer formers. All types of oil-soluble and oil insoluble residue are brought into suspension and removed during the next oil change. An Engines which has been cleaned of deposits and contamination and which is then filled with fresh oil not contaminated with old impurities can develop its full performances characteristics.

Application: Cleaning and flushing out the oil circuits of gasoline and diesel engines. The use of engine flush is Dependent on the degree of contamination of the oil circuit. Not suitable for use on motorbikes with wet clutches. One 300ml can is sufficient for up 6 liters of oil. Add engine flush to the motor oil at running temperature before changing the oil. After adding the product, allow the engine to idle for approx 10 minutes Then change the oil and the filter. Engine flush is compatible with all commercially available motors oils

PART NO	CONTENTS	UNITS IN CARTON
EFCCC87	300ML	20



RADIATOR FLUSH

Description: A concentrate specially developed for cooling systems in general but particularly those in motor Vehicles dissolve contaminants containing lime and oil in radiators heating systems, pipes and in engine .Modern Formula containing complex ants with active cleaning agents.

Application: Suitable for all cooling water systems in motor vehicles, buses and commercial vehicles. Add contents to the Cooling water. Run the heating system. Depending on the degree of contamination, let the engine run Approximately 10

PART NO	CONTENTS	UNITS IN CARTON
RFCCC89	300ML	20



OIL SMOKE STOP

Description: Oil Smoke stop reduces the oil consumption of gasoline and diesel engines via the piston rings and valve guides. It prevents blue smoke and oil mist and acts against the loss in viscosity in motor oils. Oil smoke stop Increase the Compression ratio and reduces engine noise. Provides extra protection in engines with high levels of wear. Extends the Service life of catalytic converters.

Application: For all gasoline and diesel engines. Compatible with all commercially available motor oils. Not suitable for Use in motorbikes with wet clutches. One 300 ml can of oil smoke stop is sufficient for 4-6m liters of motor oil. Do not add More than 10% .Add to the warm motor oil during every oil change and between oil changes if oil consumption is very High.

PART NO	CONTENTS	UNITS IN CARTON
OUECC86	300ML	20



RADIATOR ADDITIVE SEALANT

Description: Radiator additive Sealant is dispersion for sealing leaks in water –cooling systems in motor vehicles. The Product reliably seals hair cracks and small leaks. The solids dispersion is stabilized carrier fluid.

Application: Used for sealing small leaks in cooling circuits of passenger motor vehicles commercial vehicles , buses and Two-wheel vehicles. Also suitable for cooling circuit with filters. Shake container before use .Run the heating System. With the engine running, pour the contents into the cooling fluid at operating temperature and allow the engine to continue running for a further 10 minutes. The content is sufficient for 10 liters of coolant.

PART NO	CONTENTS	UNITS IN CARTON
RSCCC65	300ML	20



EGR CLEANER

Description: MOTO CHEM is formulated to liquefy and remove even the most stubborn oil deposits and unburned fuel Formed by EGR and PCV gases as the pass through the air intake and intake valves. MOTO CHEM will liquefy The deposits allowing them to be burned in the normal Combustion process.

Application: For the air intake manifold, inlet valves and EGR valve of all diesel engines. Also recommended to be Used at Each service interval to maintain cleanliness possibility to use an extension spray tube with multiple Injection holes (Option).

PART NO	CONTENTS	UNITS IN CARTON
ECCCC12	300ML	20



ADDITIVES & FLUSHES



GEAR OIL ADDITIVE

Description: Gear oil Additive considerably reduces wear and lowers peak temperature. Gear Oil Additive smooth out Tooth faces and ensures almost wear –free smooth running operation as well as less harsh shifting. For special use in Manual and differential; transmission.

Application: Added to motor vehicle manual transmission axle drivers, differential transmissions and mechanical Steering systems. Add gear additive to the gear oil –mixing takes place automatically during operation. The product is suitable for both mineral and synthetic based gear oils. 300ml is sufficient for 1 liter of gear oil.

PART NO	CONTENTS	UNITS IN CARTON
GACCC64	300ML	20



AIR INTAKE CLEANER

Description: Special active solvent for cleaning typical contamination and deposits found in the intake and throttle Valve areas. Dissolves and removes all smeary deposits and contaminants such as oil, resins, adhesive residues, etc. Also reliably cleans nozzles and internal components. Ensures the operability of all moving parts and reduces fuel Consumption

Application: To be used for all gasoline engines with MOTO CHEM air intake Cleaner Tool/Equipment.

PART NO	CONTENTS	UNITS IN CARTON
TCCDL20	450ML	20

TWO WHEELER ADDITIVES



FUEL ADDITIVE (T/W)

Description: Two wheeler /bike oil Additive is a colloidal, MoS solid-lubricant no deposits, absolutely compatible with all filter systems, reduces running –in and running wear reduces oil and fuel consumption increases engine smoothness, reliability and economy can be used with wet clutches tested for catalytic converter compatibility, compatible with fine filters.

Application: Added to engine oil for four –stroke motorbike engines and two –stroke engines with separate lubrication. Can be used with wet multi –disc clutches .For two-stroke engines with mixture lubrication, two wheeler oil additive is added to the petrol –oil mixture.

PART NO	CONTENTS	UNITS IN CARTON
FAL95	50ML	30



OIL ADDITIVE (T/W)

Description: TFour –Stroke Bike Additive contains and dispersant additives and is specially formulated for four –stroke motorbike engines (aspirated and injection)

Application: Protects the fuel systems from corrosion . Normalizes petrol consumption and exhaust values. Reduces Knocking tendency in the engine. Breaks down residues in valves and combustion chamber. Cleans the carburetor and injectors. Increases economy, operational reliability and performances . Tested for catalytic converter compatibility ,environmentally friendly.

PART NO	CONTENTS	UNITS IN CARTON
EAL96	50ML	30



ENGINE OIL FLUSH (T/W)

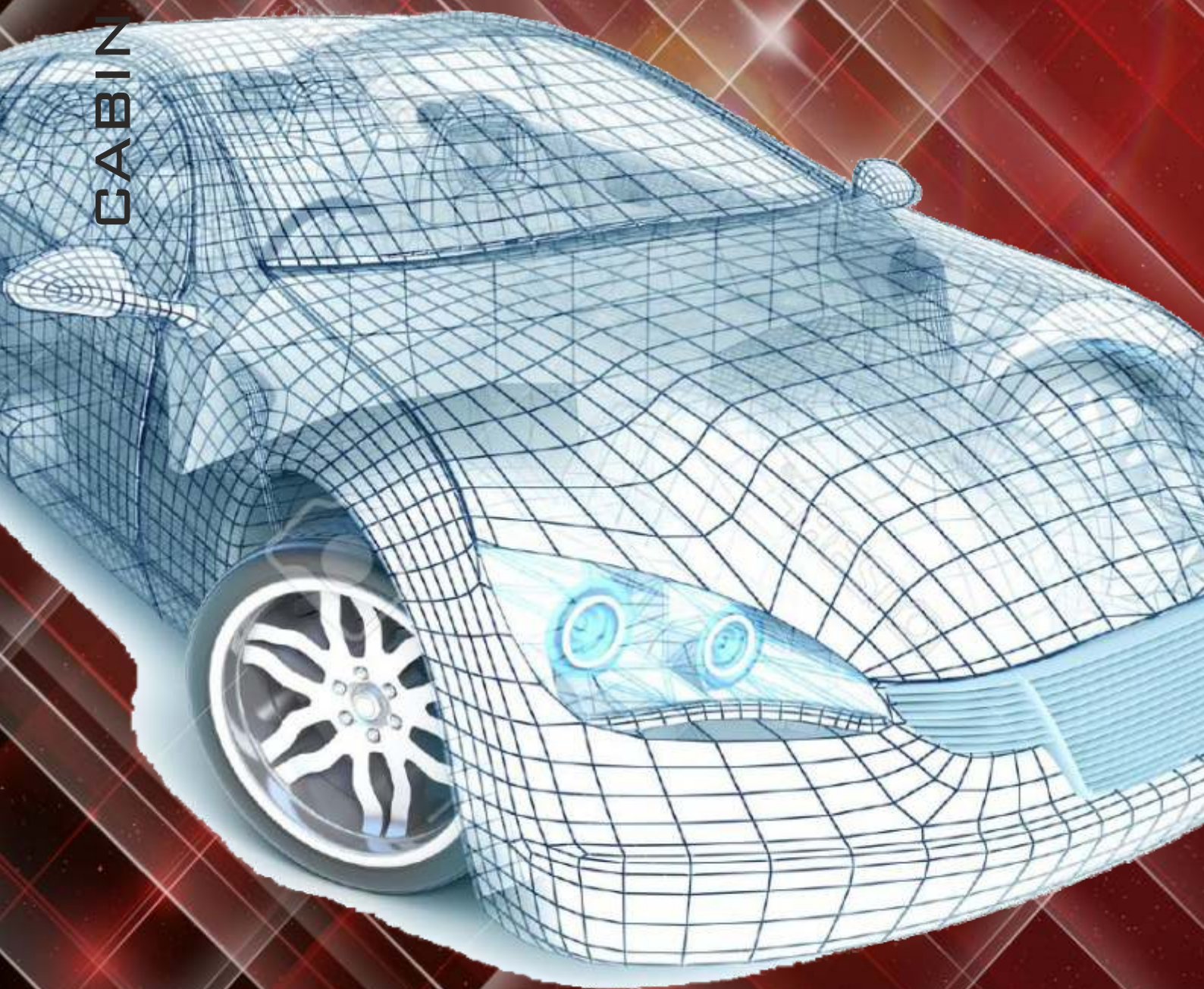
Description: Engine Flush is a specially formulated combination of additives and carrier fluid.

Application: One 300 ml can is sufficient for up to 4.5 liters of oil. Add Racing engine flush to the motor oil at running temperature before changing the oil. After adding the product, allow the engine to idle for approximately 10 minutes. Then change the oil and the filter .Two wheeler engine flush is compatible with all commercially available motor oils. Suitable for use on motorbikes with wet clutches.

PART NO	CONTENTS	UNITS IN CARTON
EFL97	50ML	30



CABIN CARE





CABIN CARE



CLIMA FRESH

Description: Within a short time (approx .10 minutes) removes the unpleasant odors that are caused by bacteria and mold in air conditioning systems, ventilation ducts or vehicle interiors. Simple use without removal of the pollen or dust filter. A Pleasant, fresh fragrance lingers behind .Works to prevent allergic reactions.

Application: Before applying the product the surface of the evaporator should be dried by using the vehicles heating system. For this, the engine must be started. Afterwards the air conditioning system must be switched off. Set the temperature switch to max. (Warm) and the heating and ventilation system to legroom position. Let the system operate for 10 minutes at max, fan power and in recirculation mode. Shake the can well before use.

PART NO	CONTENTS	UNITS IN CARTON
CMCL52	150ML	20



ODOR KILLER

Description: Odor Killer has been specially developed to absorb unpleasant smells such as nicotine, animal smells and other, the biological agents and mild fragrance which this product contains create a pleasant environment.

Application: Odour killer is suitable for use in the vehicle interior as well as in the home for neutralizing smells in clothing and upholstery.

PART NO	CONTENTS	UNITS IN CARTON
OKC13	100ML	30





TECHNICAL AEROSOLS





TECHNICAL AEROSOL



RUST OUTT

Description: Rapid Rust Remover contains a selection of agents with excellent rust-dissolving, water repellent, protective and penetrating properties.

Application: The outstanding properties of Rapid Rust Remover lead to a wide range of application in the factory or workshop, on motor vehicles and all equipment in the home as well as in hobbies.

PART NO	CONTENTS	UNITS IN CARTON
L1326	50ML	25
ROC26	100ML	30
ROCL26	150ML	20
ROCDL26	450ML	20



BRAKE LINING CLEANER

Description: Brake Lining Cleaner has been specially developed from synthetic and ceramic materials which eliminate brake squeals arising between the brake piston or contact surfaces and the brake lining.

Application: Brake Lining Cleaner is suitable for the assembly, repair and maintenance of brake systems. Used for basic lubrication and as a preventive measure against brake squeals. However it also universally suitable for numerous application apart from brake systems.

PART NO	CONTENTS	UNITS IN CARTON
BCC28	100ML	30
BCCDL28	450ML	20



WINDOW DRESSER

Description: WINDOW DRESSER is an excellent Polymer based lubricant for Rubber, Plastic, Metal parts and assemblies used in window frames of Automobiles, Sliding windows, Rubber Beadings, Rubber Rollers, Conveyors etc.

Application: To spray on rubber channel & rubber beadings of car window frame and carryout smooth up and down movement of glasses of automobile windows till the movement becomes free from sticking.

PART NO	CONTENTS	UNITS IN CARTON
WDCDL19	450ML	20



THROTTLE / CHOKE AIR INTAKE CLEANER

Description: Special active solvent for cleaning typical contamination and deposits found in the intake and throttle valve areas. Dissolves and removes all smeary deposits and contaminants such as oil, resins, adhesive residue etc. Also reliably cleans nozzles and internal components. Ensures the operability of all moving parts and reduces fuel consumption.

Application: Removes contamination and deposits in the intake and throttle valve area. Only suitable for use in gasoline engines. Turn the engine off, thoroughly spray the parts to be cleaned and allow the agent to take effect for 2 to 3 minutes. Then restart the engine and generously spray the complete area again with the engine running at medium speed. Repeat cleaning in extreme cases.

PART NO	CONTENTS	UNITS IN CARTON
TCC27	100ML	30
TCCL27	150ML	20
TCCDL27	450ML	20



MULTI PURPOSE SPRAY ML4

Description: ML 40 Multi Purpose spray is a combination of different agents with excellent corrosion protection, rust removing, water-displacement properties as well as an outstanding lubricating effect. In addition to this ML40 Multifunction spray also improves electrical conductivity at contacts and removes dirt and stubborn oil and grease residues. Due to the combination of agents in the product, moving parts can be kept operational in all areas. The product gives off a pleasant aroma from the coconut fragrances contained in the formulation.

Application: The outstanding, multifaceted properties of ML40 Multipurpose spray make it suitable for thousands of application in the home, leisure time and in the workshop and industry. Spray the place to be treated with ML 40 Multifunction spray and leave it to take effect.

PART NO	CONTENTS	UNITS IN CARTON
MPSCDL23	450ML	20



PAINT TOUCH-UP SPRAY

Description: **SURFACE CLEANING :** Surface to be sprayed must be clean, dry & free of dirt, grease, rust, Sand with waterproof fine emery paper for a uniform finish. **BEFORE SPRAYING :** Shake can vigorously until agitator ball moves freely. **SPRAYING :** Hold can upright about 25 cms. from the surface. Depress head fully & spray in stroking motion to avoid dripping.

FOR BEST RESULTS : Apply 2-3 times coats several minutes apart.

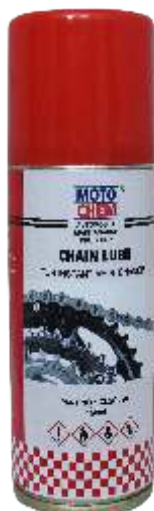
CLEAN SPRAY HEAD AFTER USE: By turning can upside down and press head 2-3 times. For CLOGS Remove the spray head, rinse it in the thinner & replace.

PART NO	CONTENTS	UNITS IN CARTON
PSCDL41	450ML	20



TECHNICAL AEROSOL

CHAIN LUBE



Description: High-quality thermos table, extremely adherent, throw –proof lubricant compound. After the solvent has evaporated, the product leaves an extremely adherent soft film of grease. Also suitable for O-ring chains.

Application: Initial and maintenance lubrication of power transmission chains. Especially suitable for dusty, dirty and corrosive environments. Due to extremely good adherence especially suitable for high –load, fast –running chains.

PART NO	CONTENTS	UNITS IN CARTON
CHLC21	100ML	30
CHLCL21	150ML	20
CHLCDL21	450ML	20

CHAIN CLEANING SPRAY



Description: High quality chain cleaning spray has been formulated solvent which cleans the chains thoroughly and keeps no residue in the chains.

Application: Initial and maintenance cleaning of power transmission chains. Especially suitable for dusty, dirty and corrosive environments. Due to extremely good detergent properties suitable for high –load, fast –running chains.

PART NO	CONTENTS	UNITS IN CARTON
CHCC22	100ML	30
CHCCL22	150ML	20
CHCCDL22	450ML	20

V-BELT SPRAY



Description: V-Belt Spray is a special combination of agents formulated for maintaining and increasing the efficiency and performances of V-belt drives.

Application: Added to motor vehicle manual transmission axle drivers, diFor all types such of belts such as leather, rubber, balata and hair etc. Not suitable for the use on flat belt.

PART NO	CONTENTS	UNITS IN CARTON
VBCDL15	450ML	20

BATTERY TERMINAL SPRAY



Description: The Product Produce a long-lasting, temperature- resistant micro film which protects the Moto Chem, terminal clamps and plug-in connections against corrosion, weathering and Battery acid. In addition, it also prevents contact resistance and Voltage Drops, increasing the service life of the Battery.

Application: Specially designed for battery terminal protective application used in cars, vehicles, UPS systems for all types of battery terminals.

PART NO	CONTENTS	UNITS IN CARTON
BTSC13	450ML	20

TACKY LUBE SPRAY



Description: Lithium Grease is a synthetic high-quality, heat –resistant, extremely adherent and acceleration –resistant lubricant compound. After the solvent has evaporated; the product leaves an extremely adherent soft film of grease.

Application: For the preventative regular lubrication of components in vehicle such as hingers, joints, linkages, reversing levers and door catch bands. Spray an appropriate amount of lithium grease onto the cleaned parts to be treated.

Follow the relevant instructions of the vehicle manufacture.

PART NO	CONTENTS	UNITS IN CARTON
TLSCDL18	450ML	20

ELECTRICAL CONTACT CLEANER



Description: Electrical Spray is fully synthetic contact spray which compatible with all plastics and PVC Formulated for use on vehicle electronic and electrical Systems

Application: used for the care and maintenance of all electrical components on the motor vehicle such as plug and terminal connections

PART NO	CONTENTS	UNITS IN CARTON
ECCDL17	450ML	20



TECHNICAL AEROSOL



COCKPIT BRIGH

Description: Cockpit Bright is a high-lubricant ageing resistant, silicone-based car care product dissolved in chlorine free solvent which has been formulated for broad application on motor vehicles.

Application: For care of dashboards plastic coatings, bumpers for squeaky and creaky dashboards and sluggish seat belts.

PART NO	CONTENTS	UNITS IN CARTON
CBCDL38	450ML	20



GLASS FOAM CLEANER

Description: : Glass Foam cleaner has been specially developed of removes dirt and contaminants quickly and effectively. The result is a better view and greater safety.

Application: On motor vehicles Motor Vehicle windows and headlights. In the house: Windows and mirrors.

PART NO	CONTENTS	UNITS IN CARTON
GFCDL73	450ML	20



TYRE & ALLOY FOAM CLEANER & SHINNER

Description: Tyre Bright Foam has been specially developed for cleaning, treating and protecting tyres as well as enhancing their appearance of weathered tyres by restoring the sheen to the rubber surface. Slightly alkaline, even sensitive aluminum rims as well as wheel nuts are not affected (acid-free) .It meets the requirement of the detergent and cleansing agent regulations.

Application: Tyre Bright Foam has been developed for cleaning treating and protecting tyres.

PART NO	CONTENTS	UNITS IN CARTON
TACDL40	450ML	20



TREE RESIN REMOVER

Description: : Tree Resin Remover is a highly effective combination of solvents for removing resin spots from motor vehicles, camper vans, motorbikes, bicycle and tools etc. Formulated to be highly effective and compatible with paint.

Application: : For cleaning almost all types of surfaces contaminated with resin.

PART NO	CONTENTS	UNITS IN CARTON
TRCDL41	450ML	20



TAR REMOVER

Description: Tar Remover is a highly effective combination of solvents for removing resin and tar spots from motor vehicles, camper vans, motorbikes, and bicycle and tools etc .Formulated to be highly effective and compatible with paint.

Application: For removing all types of tar-based contaminants such as tar asphalt etc from vehicles. Removes grease spots and spots of fresh paint.

PART NO	CONTENTS	UNITS IN CARTON
TRCDL42	450ML	20



BLACK MATT & GLOSSY SPRAY

Description: **SURFACE CLEANING** : Surface to be sprayed must be clean, dry & free of dirt, grease, rust, Sand with waterproof fine emery paper for a uniform finish. **BEFORE SPRAYING** : Shake can vigorously until agitator ball moves freely. **SPRAYING** : Hold can upright about 25 cms. from the surface. Depress head fully & spray in stroking motion to avoid dripping.

FOR BEST RESULTS : Apply 2-3 times coats several minutes apart.

CLEAN SPRAY HEAD AFTER USE: By turning can upside down and press head 2-3 times. For CLOGS Remove the spray head, rinse it in the thinner & replace.

PART NO	CONTENTS	UNITS IN CARTON
SCCDL03	450ML	20



TECHNICAL AEROSOL

ENGINE GLOSS (P.U. COATING)



Description: High gloss water repellant protective paint for preserving the engine compartment. The engine looks new again, prevents corrosion and repels dirt. Protects the engine, ignition leads and system from dampness and humidity. Compatible with rubber and plastic components.

Application: For all engine compartments and engines in passenger vehicle, buses and two wheeler vehicle.

PART NO	CONTENTS	UNITS IN CARTON
EGCDL10	450ML	20

CAVITY WAX



Description: Corrosion inhibitor for cavity Protection. it's a Thin Light Thixotropic Solution with Good atomizing properties to reach inaccessible areas such as narrow gaps inside the panels to protect rusting. Cavity Protection spray contains high proportion of rust inhibitors. on drying completely the product forms a very tough, Permanently soft water-repellent protective film

Application : Shake can well before use. Depending on the are of application, apply in crossed lines over a large area or using a spray lance (integrated in the cover cap) or 600 mm tube (optional accessory) in cavities. Optimum materials temperature: 10-30°C.

PART NO	CONTENTS	UNITS IN CARTON
CTCDL13	450ML	20

SILENCER / SILICON SPRAY



Description: Silencer coating is a heat resistant (up to 600 C) specially developed for automobile silencers, & industrials used metals for high protection where high temperature requirements are prevalent. the spray is effective on many metals, such as iron, steel galvanised steel, white iron, cast iron, copper and brass, etc.

PART NO	CONTENTS	UNITS IN CARTON
SPCDL11	450ML	20

SPRAY COAT



Description: **SURFACE CLEANING :** Surface to be sprayed must be clean, dry & free of dirt, grease, rust, Sand with waterproof fine emery paper for a uniform finish. **BEFORE SPRAYING :** Shake can vigorously until agitator ball moves freely. **SPRAYING :** Hold can upright about 25 cms. from the surface. Depress head fully & spray in stroking motion to avoid dripping. **FOR BEST RESULTS :** Apply 2-3 times coats several minutes apart.

CLEAN SPRAY HEAD AFTER USE: By turning can upside down and press head 2-3 times. For CLOGS Remove the spray head, rinse it in the thinner & replace.

PART NO	CONTENTS	UNITS IN CARTON
SCCDL03	450ML	20

INSTANT FOAM CLEANER



Description: Upholstery foam cleaner is an active foam cleaner which has been specially developed for gently and quickly removing dirt from various types of upholstery, velour's, carpets and vehicle coverings. Upholstery cleaner foam forms crystal as the foam dries out, freshens the colours on the parts which have been cleaned but does not leave any dirty edges after treatment.

Application: Particularly gentle cleaning effect on upholstery, carpets, velour's, vehicle covers and textiles etc.

PART NO	CONTENTS	UNITS IN CARTON
ICCDL44	450ML	20

ANTI - RAT TREATMENT

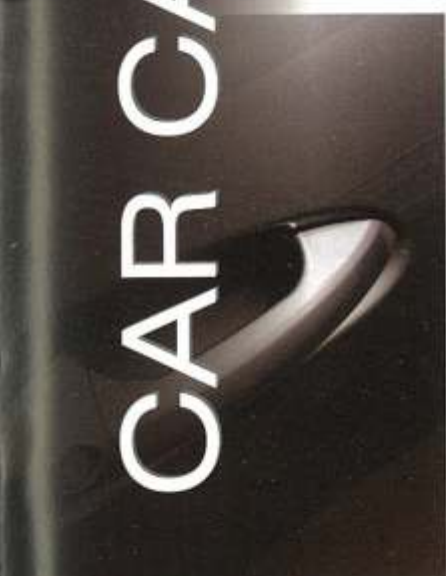


Description: Anti Rate Treatment Spray is an easy to use, natural essential oil based product. When sprayed it prevents rodents from nesting, traveling and congregating in unwanted areas. ideal for Cars, Trucks, Buses, Schools, Homes, Offices, Warehouses, Garages etc. This product does not kill rodents but just drives them away. Being essential oil based, this product is harmless to humans and has a pleasant minty smell.

Application: It is ideal for protecting large & small vehicles from the threat of rodents damaging wiring, cables etc. This product can also be used for other applications where plastic pipes for gas water and other liquids are used for general utilities underground. It will also prevent rodent colonies underground in certain areas. This product also prevents rodents from biting wires, cable, and conduit.

PART NO	CONTENTS	UNITS IN CARTON
ATCDL90	450ML	20

CAR CARE





CAR CARE



PRE PAINT CLEANER

Description: Pre paint cleaner removes tar stains and dirt ,oil and grease spots .Cleans and polishes. Restores the original depth of colour. Evens out slight surfaces scratches. Removes contaminants and weathered paint particles. Cleans and polishes paintwork .The paintwork should then be treated with Moto Lube solid Wax. Suitable for polishing machines.

Application: For colored and metallic paints-from matt to very badly weathered paint surfaces, Removes tar stains and dirt ,oil and grease spots.

PART NO	CONTENTS	UNITS IN CARTON
PPCD06	500ML	20



PAINT SURFACE PROTECTION

Description: Due to its special composition. Magic paint protection easily events out light scratches and freshens up the paint surfaces in a single process. The original gloss is easily restored to matt and weathered paintwork. After treatment , the paint surfaces clearly show increased resistance to harmful environments.

Application: Specially developed for coloured paints-in matt to weathered condition. The original gloss and appearance is easily restored to matt and weathered paintwork. Suitable for machine polishing. Not suitable for metallic Paint.

PART NO	CONTENTS	UNITS IN CARTON
PSPD05	500ML	20



SCRATCH REMOVER

Description: Scratch Remover is the only product that completely removes scratches from all paint finishes. Imagine using a scratch remover on a car that actually repairs and completely removes the scratch, rather than just cover it up only to have it reappear after a few car washes. Scratch remover is a unique repair system that through a German engineered process called plastic deformation, effectively removes scratches from all paint finishes quickly and safely, saving you thousand of rupees in auto body costs.

Application: For colored and metallic paints from matt to very badly weathered paint surface. Remove tar stains and dirt ,oil and grease spots.

PART NO	CONTENTS	UNITS IN CARTON
SRD07	500ML	20



POLY GLAZE

Description: Due to its special composition, polyglaze cleans freshnes up and pressure the paint surfaces in a single process. The waxes silicones and polishing pigments in ploy glaze guarantee the optimum optimum cleaning of coloured and metallic paintwork as well as providing the optimum sheen with lasting effect.

Application: Specially developed to restore coloured and metallic paint-in a condition from new to slightly matt. The original gloss and appearance is easily restored to paintwork. Suitable for machine polishing.

PART NO	CONTENTS	UNITS IN CARTON
PGD08	500ML	20



CAR CARE

VEHICLE INTERIOR CLEANER



Description: Vehicle Interior Cleaner is a cleaning fluid which has been specially developed for rapidly and gentle removing dirt from plastic components, fabrics and covering oil, grease, nicotine and other contaminants.

Application: Used especially for removing dirt from all over the vehicle interior.

PART NO	CONTENTS	UNITS IN CARTON
CICLV51	5 LITRE	4

ENGINE GLOSS P.U. COATING



Description: : High gloss water repellant protective paint for preserving the engine compartment. The engine looks new again, prevents corrosion and repels dirt. Protects the engine, ignition leads and system from dampness and humidity. Compatible with rubber and plastic components.

Application: : For all engine compartments and engines in passenger vehicle, buses and two wheeler vehicle.

PART NO	CONTENTS	UNITS IN CARTON
EGCDL10	450ML	20
EGV10	5 LITRE	4

PREMIUM DASH / TYRE POLISH



Description: : The interiors parts / type of the car like dashboard, door trims etc. are made of plastic & rubber. These parts become dull and lose their luster / shine because of frequent usage over passage of time. Dust settles in the pores parts make them look dirty and ugly.

By using plastics, Dashboard & tyre care spray on these parts, the interiors of the car get a new shiny. It also gives you a healthier environment, which is free of bacteria and microbes, growing on these plastic & rubber parts.

PART NO	CONTENTS	UNITS IN CARTON
PDBTPV52	5 LITRE	4



CAR CARE



DASH BOARD / TYRE POLISH

Description: :The interiors parts / type of the car like dashboard, door trims etc. are made of plastic & rubber. These parts become dull and loser their luster / shine because of frequent usage over passage of time. Dust settles in the pores parts make them look dirty and ugly.

Application: By using plastics, Dashboard & tyre care spray on these parts, the interiors of the car get a new shiny. It also gives you a healthier environment, which is free of bacteria and microbes, growing on these plastic & rubber parts.

PART NO	CONTENTS	UNITS IN CARTON
DBTPV52	5 LITRE	4



CAR WASH SHAMPOO

Description: Car Wash Shampoo has been specially developed for gently and effectively cleaning the surfaces of paintwork. Using thoroughly biodegradable washing agents, Auto-wash shampoo removes without trace dust and oily or greasy contamination. The finely pored foam preserves paint, rubber, plastic and glass.

Application: Used specially for the gentle but thorough cleaning of paint surfaces to leave a sheen.

PART NO	CONTENTS	UNITS IN CARTON
CWSV73	5 LITRE	4



CAR CARE



GLOSS PAINT SEALANT

Description: Due to its special composition, Glass Paint Sealant evens out light scratches and freshens up the paint surfaces in a single process and the high gloss is easily restored to mildly weathered and matt paintwork. Gloss Paint sealant repels rain and dirt over long periods and increases the paint resistance to damaging environments.

Application: Specially developed for metallic paint from new to matt. The original gloss is easily restored to weathered and matt paintwork. Suitable for machine polishing.

PART NO	CONTENTS	UNITS IN CARTON
GSCDL10	450ML	20
GS5M10	1 gallon	4



SOLID WAX

Description: Solid wax protects new, finished paintwork from aggressive environments and frequent car washing. Hard wax is easy to use and reliably protects paint surfaces from harmful effects over long periods while preserving their original shine.

Application: Specially developed for metallic paint from new to matt. The original gloss is easily restored to weathered and matt paintwork. Suitable for machine polishing.

PART NO	CONTENTS	UNITS IN CARTON
SWCDL13	450ML	20
SW5M13	1 gallon	4



DRY WASH

Description: It contains fine abrasives specially polymer resin and camauaba wax. It cleans and protects in one easy step. It is clear coat safe and very easy to use.

Application: Get rid of any sand particles by dusting or rinsing the car. (Please note, even though the product contains necessary lubricants, it is highly recommended that you take proper precautions to avoid entrapping any hard sand particles(s) to avoid any unintended damage to painted surfaces. Then spray dry wash and apply it with wax applicator or clean cloth. Do not allow it to dry and wipe off to clean shiny surfaces with a clean soft towel or micro-fiber. It provides a nice shine and good protection.

PART NO	CONTENTS	UNITS IN CARTON
DWCC34	200ML	30
DW5M34	1 gallon	4



CAR CARE



ONE FOR ALL DEEP TREATMENT

Description: One-for-all Deep Treatment is used universally for cleaning, preserving, care and protection. One for all Deep Treatment can be used for motor vehicles and hobbies and in the household and garden. This high concentration treatment preparation gives deep matt-silk sheen to even badly weathered plastics surfaces. One for-all Deep Treatment repels dirt, dust and water and provides long-term protection.

Application: Due to its wide application, One for all Deep Treatment can be used for rubber, plastics, leather, vinyl roofs and sealed wooden surfaces on vehicles as well as in the household and in the garden. For internal and external use.

PART NO	CONTENTS	UNITS IN CARTON
ODTC26	100ML	30
ODT5M26	1 gallon	4



WINDOW CLEANER

Description: Window Cleaner Concentrate is a highly effective cleaning concentrate which has been specially formulated for use in vehicle windscreen washer systems as well the manual cleaning of vehicle windows.

Application: Vehicle windscreen washer systems.

PART NO	CONTENTS	UNITS IN CARTON
WCC29	100ML	30
WC5M29	1 gallon	4



ENGINE DE-GREASER

Description: Engine De-Greaser has been specially formulated for cleaning the engine and the engine compartment. The product dissolves oil grease residues easily as it does tar, brake abrasion and other contaminants.

Application: For cleaning engines and engine compartment.

PART NO	CONTENTS	UNITS IN CARTON
EGC46	100ML	30
EG5M46	1 gallon	4



CAR CARE



ENGINE CARE

Description: Rubber Treatment has been specially developed to give the optimum treatment to rubber components and tyres. Rubber Treatment cleans, protects and enhances the appearance of tyres and rubber components in a single process. Rubber treatment freshens the colours, keeps rubber components shining and elastic and prevents rubber door seals from freezing closed in water.

Application: Specially used for the treatment, protection and surface preparation of rubber components such as tyres rubber door seals and mats etc in the passenger vehicle sector.

PART NO	CONTENTS	UNITS IN CARTON
ECD53	500ML	20
EC5M53	1 Gallon	4



GLASS WATER REPELLENT

Description: Glass water repellent is a combination of agents which has been specially formulated to repel rainwater from vehicle windows and helmet visor's wipers. Glass water repellent increase driving safety and comfort.

Application: Used especially for repelling rainwater from vehicle windows and helmet visors.

PART NO	CONTENTS	UNITS IN CARTON
GRC49	100ML	30
GR5M49	1 gallon	4



PREMIUM RUBBING POLISH

Description: Premium Rubbing Polish are type of car wax product with a slightly heavier girt than a fine polish. Compounds are used when the cars finish begun to fade, water spots are heavier and not being removed by the soap or when you have minor scratches. After buffing the compound out, it's always a good idea to add a good coat of a quality car wax product to both enhance the shine and protect the finish.

Application: Apply sufficient quantity of premium rubbing polish and spread uniformly. Rub with hand or machine in a circular motion.

PART NO	CONTENTS	UNITS IN CARTON
PPC63	100ML	30
PP5M63	1 gallon	4



CAR CARE



CREMEE PASTE WAX

Description: Cremee paste wax is a high –grade liquid carnauba wax that imparts a slick, glossy shine and durable paint protection, crème paste wax provides superior paint protection against airborne contaminants, dirt , road salt , acid rain and anything else that plaques a daily driver. This easy on, easy off liquid wax is pleasure to work with and you will surely be impressed with the level of gloss and paint protection it provides.

Application: Liquefy paste using applicator moistened with water. Spread thin, even coat over the vehicle, plastic and trim. Dry for 3 to 5 minutes. Remove excess wax and wipe to a high gloss shine with alternate sides of a microfiber cloth.

PART NO	CONTENTS	UNITS IN CARTON
CWC69	100ML	30
CW5M69	1 gallon	4



RUBBER CARE

Description: Rubber care has been specially developed to give the optimum treatment to rubber components and tyres . Rubber treatment cleans, protects and enhances the appearance of tyres and rubber components in a single process. Rubber treatment freshens the colours, keeps rubber components shining and elastic and prevents rubber door seals from freezing closed in winter.

Application: Rubber care has been specially developed to give the optimum treatment to rubber components and tyres . Rubber treatment cleans, protects and enhances the appearance of tyres and rubber components in a single process. Rubber Treatment freshens the colours keeps rubber components shining and elastic and prevents rubber door seals from freezing closed in water.

PART NO	CONTENTS	UNITS IN CARTON
RCD12	500ML	20
RC5M12	1 Gallon	4



WHEEL RIM CLEANER

Description: With a new formula of active agents and colour-indicator. For gentle and intensive cleaning of aluminum rims and rims made of steel from brake abrasion and other types of soiling. Due to gel-like consistency, the product also adheres to vertical surfaces and guarantees an optimal cleaning capacity. The soiling is penetrated and dissolved quickly and effectively. The cleaning process can be controlled visually by change of colour and reaches its optimum when the cleaner on the wheel rim change its colour (to violet). As the pH value of the product is slightly alkaline, even sensitive aluminum rim as well as wheel nuts are not affected (acid-free). It meets the requirement of the detergent and cleansing agent regulations.

Application: Used specially for the gentle but thorough cleaning of paint surfaces to leave a sheen.

PART NO	CONTENTS	UNITS IN CARTON
WCCDL71	450ML	20
WC5M71	1 gallon	4



CAR CARE



HEAD LAMP POLISHER & RESTORES

Description: Head lamp polisher is a revolutionary product that specifically cleans and polishes head lamps for a cleaner vision. It cleans dirt and stubborn "yellow wish" stains effectively. It is suitable for all plastic, glass and crystal head lamp covers.

Application: Specially developed for head lamp glass-in matt to weathered condition, especially for repelling rainwater from vehicle windows and helmet visors. Not suitable for metallic paint.

PART NO	CONTENTS	UNITS IN CARTON
HPRCC50	200ML	30



CARNAUBA CAR WAX

Description: Only from the original Moto Lube

Made from 1 grade Camauba Wax

Beads water up to 12 months.

Restores auto paint finishes to look like new

Safe for clear coat finishes.

Moto Lube Carnauba Wax gives your car a high gloss shine and water beading protection that lasts .Camauba is the world's hardest natural wax, providing unequalled performances. Exclusive micro -polishing agents remove scratches and haze to bring out the true,rich color of auto paint.

PART NO	CONTENTS	UNITS IN CARTON
CCWC52	180GMS	30



CHROME POLISH / CAR LOGO CLEANER & SHINER

Description: Car Logo cleaner & shiner has been specially formulated to thoroughly and gently remove rust, flash rust and blank spots from chromium parts and decorative metals. Car logo cleaner & shiner cream preserves all chromium and decorative metal parts with a protective film and restores their original brilliance.

Application: Specially developed for cleaning of chromium and decorative metal parts on motor vehicles, motorbikes and bicycles.

PART NO	CONTENTS	UNITS IN CARTON
CCSV72	500ML	20



CAR CARE



ULTRA SHINE

Description : Specially developed for the metallic paint from matt to new high gloss. The Original gloss is easily restored to weathered and matt paintwork. Suitable for machine polishing.

First thoroughly clean the surface to be polished and dry them carefully. Apply the solvent with sponge on the painted surface, then buff it with machine or with micro fiber cloth Remove this and polish using a clean, dry cloth. Regular application gives the optimum results.

PART NO	CONTENTS	UNITS IN CARTON
USC73	100GM	10



CREAM POLISH

Description : Specially developed for the metallic paint from matt to new high gloss. The Original gloss is easily restored to weathered and matt paintwork. Suitable for machine polishing.

First thoroughly clean the surface to be polished and dry them carefully. Apply the solvent with sponge on the painted surface, then buff it with machine or with micro fiber cloth Remove this and polish using a clean, dry cloth. Regular application gives the optimum results.

PART NO	CONTENTS	UNITS IN CARTON
CPC73	100GM	10



ALL PURPOSE CLEAN & SHINE

Description: All surfaces of vehicles and bound to Fade after some time such as Paint , Plastic & Rubber Parts of Car & Bikes .MTPL has developed a unique product which not only get back the original looks of these parts but also gives better shine.one product for all needs of Fadeness.

Application: Clean & dry the surface to be treated Shake the bottle and spray the Shiner on one side of the clean Micro Fibre cloth Apply uniformly on the surface and allow it to dry Gently buff the Painted surface using dry side of the cloth for the impeccable shine. Plastic or rubber parts do not require buffing but wipe off any excess shiner.

PART NO	CONTENTS	UNITS IN CARTON
SPCC73	200ML	30



MICRO FIBRE CLOTH

Description : Micro fibre cloth is multi user cloth for all your home use product such as TV Refrigerators remotes. The product is used for cleaning the dust on your car also.

PART NO	CONTENTS	UNITS IN CARTON
MFC13	1	10 / 50



CAR CARE



SPRAY POLISH

Description: All surfaces of vehicles and bound to Fade after some time such as Paint, Plastic & Rubber Parts of Car & Bikes. MTPL has developed a unique product which not only get back the original looks of these parts but also gives better shine. one product for all needs of Fadeness.

Don't use the Product on grip areas such as handle, steering, brake pads rear view mirrors Avoid contact with eyes in case of contact flush with clean and running water for extended period of time and if need be, see the doctor

PART NO	CONTENTS	UNITS IN CARTON
SPCC73	200ML	30



PLASTIC SHINE TREATMENT

Description: Plastic shine is a combination of agents which has been formulated to protect, treat and enhance the appearance of all plastic components in the motor vehicle. Plastic shine gives the plastic surfaces a matt-silk deep shine and it also repels dust, dirt and water. By repeated use badly weathered plastic surfaces can be restored to pleasing appearances.

Application: Specially developed to protect all plastic surfaces on the motor vehicle exterior, camper vans and equipment, boats, sports items and the household.

PART NO	CONTENTS	UNITS IN CARTON
DDSV70	500ML	20



RUBBING COMPOUND

Description: Rubbing Compound is a medium cut compound designed to remove heavy swirl marks, scratches and surfaces blemishes. The rubbing compound is formulated with medium cut compound with professional grade nano technology polishing agents to restore your cars finish and prepare it for waxing. The Nano technology are also designed to level and polish surfaces imperfections while producing a smooth slick surfaces and flawless shine on your car truck, van or SUV finishes. Rubbing compound is silicone free and is safe for use on all clear coat and conventional finishes.

Application: Apply sufficient quantity of premium rubbing polish and spread uniformly. Rub with hand or machine in a circular motion.

PART NO	CONTENTS	UNITS IN CARTON
RCM72	1 KG	20



CAR CARE

Car Dangler



Wet Wipes



CAR PERFUME

Benefits: Bring enchanting smell in your room / car. Car interiors consists of various substances do to the movement of the car lot of bad smell gets crop inside the car with gives unpleasant smells to make car interiors nice place to sit car good quality car perfume should be used moto chem offers various range of car perfumes which have long lasting different types of fragrances.



PART NO	CONTENTS	UNITS IN CARTON
CPC	100ML	30

ALL PURPOSE CLEAN & SHINE

Description: All surfaces of vehicles and bound to Fade after some time such as Paint , Plastic & Rubber Parts of Car & Bikes .MTPL has developed a unique product which not only get back the original looks of these parts but also gives better shine.one product for all needs of Fadeness.

Application: Clean & dry the surface to be treated Shake the bottle and spray the Shiner on one side of the clean Micro Fibre cloth Apply uniformly on the surface and allow it to dry Gently buff the Painted surface using dry side of the cloth for the impeccable shine. Plastic or rubber parts do not require buffing but wipe off any excess shiner.



PART NO	CONTENTS	UNITS IN CARTON
APSL	50ML	30

TYRE SHINE

Description: Tyre shinner has been developed to keep the tyres clean and glossy. Tyre shinner has been specially developed for cleaning treating and protection as well as Enhancing there appearance of weathered tyres by restoring the rubber surface Slightly alkaline even sensitive aluminium rims as well as wheel nuts are not affected (acid free) it meets the requirement of the detergent and cleaning agent



PART NO	CONTENTS	UNITS IN CARTON
TSC31	100ML	30

GLASS CLEANER

Description: This glass cleaner spray works best on mirrors, windows, or any glass surface and contains powerful cleaning ingredients that can help you remove grime and grease with ease.

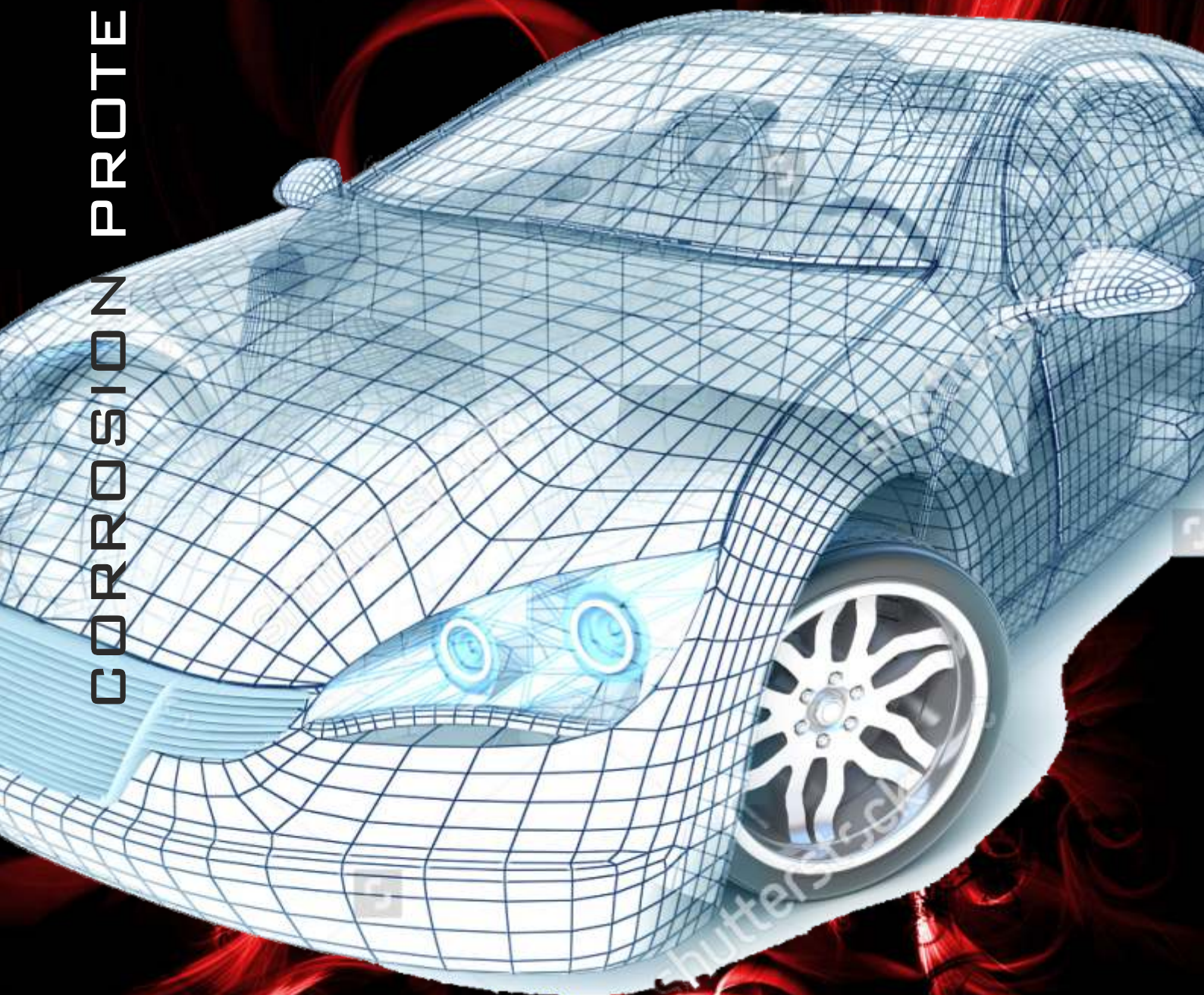
Application: If you want a streak-free glossy windows, this awesome cleaner spray can produce the result you want.



PART NO	CONTENTS	UNITS IN CARTON
GC	0ML	0



CORROSION PROTECTION





CORROSION PROTECTION



UNDERSEAL PROTECTION BITUMENS BASE

Description: Under seal is a thixotropic mixture of bitumen's, synthetic resins , solvents and special inhibitors. After evaporation, a tough elastic film remains which provides protection against environmental effects and Corrosion from de-icing salt. Underseal has excellent corrosion properties. The product is thixotropic and is Therefore applied as non-drip coating. This means that the product can be painted on in thick layers within a Single application.

Application: The surfaces which have to be treated with under seal must be thoroughly cleaned beforehand. Rust Must be removed. The surfaces must be dry and free of wax, dirt and grease and extensively free of dust. It is to be Applied with part No. 8020 Moto chem. Anti Corrosive Spray gun.

PART NO	CONTENTS	UNITS IN CARTON
UPBM05	1 Ltr.	20



UNDER COAT RESIN BASE

Description: Under seal is bitumen – free, highly abrasion and solvent -containing coating material based on Rubber and resins for the permanently flexible corrosion protection of underbodies, stone guard and anti Drumming .When thoroughly dry, the coating provides permanently flexible corrosion protection with high Resistance to aging and does not become brittle in cold weather. The dry coat adheres well to the cleaned Underbody, even on painted surfaces PVC, and is characterized by a very high resistances to abrasion.

Application:: The Surfaces which have to be treated with under seal must be thoroughly cleaned beforehand. Rust Must be removed . The surfaces must be dry and free of wax, dirt and grease and extensively free of dust. Is to be Applied with Part no: 8020 Moto lube Anti corrosive spray gun.

PART NO	CONTENTS	UNITS IN CARTON
UBM01	1 Ltr.	20



ANTI CORROSIVE TREATMENT WATER BASE

Description: Description: The Product is made out of industrial hydro-carbon resin formed by heavy duty emulsion polymerizations process. It is pigmented with anti corrosive pigmented with anti corrosive pigments for better strength , opacity and water resistances properties , ideally recommended as protection over steel concrete Structure as water proofing / anticorrosive medium.

Application: Stir the contents thoroughly well before use. The product is supplied in ready use consistency. If Required 5-10% good water can be added to suit application. After the painting operation is over all the mixing Equipments, spray gun, hoses, pipeline and stirrer has to be cleaned with water. If not cleaned properly, the cured Coating film may form bits in the coating during next day application.

PART NO	CONTENTS	UNITS IN CARTON
AWBM01	1 Ltr.	20



CORROSION PROTECTION



CAVITY PROTECTION

Description: Solvent-based corrosion inhibitor for cavity protection. It is supplied as a thin, light thixotropic solution with good atomizing properties so that it can also reach relatively inaccessible areas such as narrow gaps between panels. Cavity protection infiltrates and displaces moisture. The product contains a high proportion of rust inhibitors. Cavity protection is very finely atomized during spraying, has outstanding creep properties well into narrow gaps which need protection (such as welded seams) but does not run significantly out of seams. One drying completely, this product forms a plastic, water-repellent waxy film.

Application: Cavity Protection is mainly used in the workshop for spraying the inner surfaces of cavities such as the frame side members or the doors. The product can also be used to supplement the existing repairs. Any rust which may be present on the surfaces to be treated must be thoroughly removed before treatment. The material can be used at low temperature above 10 °C, but creep behavior is improved if the product and the surfaces to be treated are at room temperature. Cavity protection can be applied using the pressure feed spray gun for cavities, part no: 6226 at an operating pressure of 2-8 bar depending on the spray pattern desired. Shake contents of can vigorously before use. The drying process may take several days, depending on the type of cavity being treated and the thickness of the film. Adequate ventilation must be provided during drying.

PART NO	CONTENTS	UNITS IN CARTON
CPCDL73	450ML	20



UNDERSEAL TRANSPARENT

Description: Vehicle body is under continuous attack by corrosive elements such as unnoticed rain water, water enters through doors, glass channels during washing and gets deposited the inside the doors, mudguard and running board etc. These are also the known clear of rust. Motochem Transport anti rust treatment is crystal clear rust penetration from inside to outside. It is formulated to provide long term protection to cars under bonnet hood under body, mudguard, running board, and dicky inner surface to a corrosive environment.

Application: The surfaces which have to be treated with under seal (Transparent) must be thoroughly cleaned beforehand. Rust must be removed. The surfaces must be dry and free of wax, dirt and grease and extensively free of dust. Is to be applied with part no: 8020 Motochem Anti corrosive Spray gun.

PART NO	CONTENTS	UNITS IN CARTON
UTC DL73	450ML	12



SILENCER / SILICON SPRAY

Description: Silencer coating is a heat resistant (up to 600 °C) specially developed for automobile silencers, & industrials used metals for high protection where high temperature requirements are prevalent. the spray is effective on many metals, such as iron, steel galvanised steel, white iron, cast iron, copper and brass, etc.

PART NO	CONTENTS	UNITS IN CARTON
SSCDL73	450ML	20



DENTING & PAINTING

Automotive Masking Tape



- Premium masking tape for professional painters that is designed specifically for automotive paint masking on all kinds of paints with easy release and residue free.

Product	Size
Masking Tape	All Sizes

Decorative Masking Tape



- High quality crepe masking tape for holding laminates. High adhesion with easily release

Product	Size
Masking Tape	All Sizes

Value Masking Tape



- General masking tape which can be used on painted wall and glass surfaces. Flexibility with ease of use in different climatic conditions.

Product	Size
Masking Tape	All Sizes

Masking Paper



- Premium quality brown paper with anti seepage properties which is easy to use.

Available in widths of 300mm, 450mm, 600 and 900mm

Part No.	Size
450300	450mm x 300 M
900300	900mm x 300 M

Masking Film (OPS)



- Masking Film which is a pre-folded, high density plastic film for draping & covering large areas for paint over spray protection

Part No.	Size
Mf0405	4 x 5
Mf400121	4 x 121
Mf400300	4 x 300

Compounding Wool Pads

- 4 ply, twisted natural wool grip pad

- Available in single sided and double sided



Part No.	Type
Cp08	Single Sided
Cp08	Double Sided

Foam Pad

- Removes grit 2500 or finer sanding marks

- Diminishing abrasive particle for quick cutting and high gloss



Part No.	Size (mm)
Yf19030	195

Automotive Sealants

- Premierless Windshield Sealant which provides a fast cure & high strength, designed to bond and seal vehicle windshields

- Body Sealant is a high-quality, multi purpose on component polyurethane sealant. It is a universal sealant used for vehicle collision repair applications



Part No.	Quantity (ml)
Gs320	320
Bs320	320



DENTING & PAINTING



Dry Sanding Sheet & Rolls

- Grills 40 to 1500
- Dry Sanding for primers, top coats and clear coats

Product	Size
Dry Roll	115mm x 50 M
Dry Sheet	9" x 11"

Dry Sanding Grip Discs

- Sanding and finishing of primers, top coats and clear coats. Sanding and finishing of wooden surfaces and wood coatings
- Extra flexibility as it is adaptable to shapes, edges and contoured surfaces
- Anti-clogging lubricant layer with long life and smooth finish

Product	Size
6" x 6 Hole Disc	40 to 2000

Abrasive Sanding Discs

- Abrasive Sanding Discs with adhesive for finishing of primers, top coats and clear coats. Sanding and finishing on wooden surfaces
- Extra Flexibility and adapts to edges and contoured surfaces. Anti-clogging lubricant layer for a high quality finish

Product	Size
5" Disc	80 to 2000

Water Proof Paper

- Grits 80 to 2500
- Wet sanding of primers, top coats and clear coats with extraordinary life.

Product	Size
Water Proof Paper	9"x11"



Masking Foam

- Foam tape for masking of apertures. Dispensed from carton. Dust free storage to eliminate wastage
- Cylindrical shape that fits the majority of vehicle applications
- Low tack adhesive strip. Easy to apply and leaves no residue



Part No.	Size (Length)
Cylindrical (13mm)	10mm x 5M = 50M
Cylindrical (19mm)	7mm x 5M = 35M

Dry Guide Coat

- Dry Guide Coat is used to identify surface imperfections such as pinholes in body filler or deep scratches in primer. A unique applicator which leaves an even powder coating. And an efficient way to highlight imperfection and scratches on polyester filler and primers.



Part No.	Quantity
5603902528983	100Gms

Trim Masking Tape

- Easy to mask and protect windscreen rubber / trim. Flexible and leaves no residue. Masking tape with plastic strip and precut tape

Part No.	Size (mm)
562864	45mm x 10M



Dust Extraction Hand Blocks

- Rhynogrip Dust Extraction Blocks are vacuum dust extraction durable composite body backup pads that are used with sanding strips of different sizes with holes

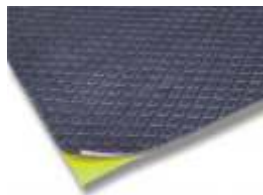


Part No.	Size (mm)
5603902449257	70 x 125
5603902435175	70 x 198
5603902449271	70 x 400



DENTING & PAINTING

Sound Deadening Pads



- Sound deadening pads for vehicle floor and inner door panels
 - High strength self adhesive backing
- Can be heated to fit curved and contoured panels, perforated pad for ease of cutting

Product	Size
5603902142448	500mm x 500mm

Dust Extraction Unit



- Sound deadening pads for vehicle floor and inner door panels
- A heavy duty machine for professional use

Part No.	Watts
EKT47	1100

Prima Orbital Sanders



- Premium quality, light weight & well balanced tool
- Increased stability during sanding operation. Protected motor to ensure high performance
- Speed regulation value for optimum usage

Product No.	Type
Prima 50	5" Non Vac. Sander
Prima 60	6" Non Vac. Sander
Prima 66	6" Non Vac. Sander

3" Angle Polisher



- 3" Angle Polisher is a 5000 RPM buffing tool for superior buffing on plastic and painted surfaces. Can be used with foam or wool pad

Part No.	Size
740	3"
450PL	3"

Electrical Polisher Kit



- Light Weight 7" Electrical Polisher with variable speed (0-3000 RPM) with spares and service support
- Comes with Foam Pad, Waffle Pad, Backup Pad & Compounding Wool Pad

Part No.	Quantity
EQ03K	1 Kit

Airvantage Orbital Sander



- Available in sizes 3.5", 5" & 6"
- Light weight, low dB level, low vibration, 12,000 RPM with spares and services support

Part No.	Type
R63100	6" Vacuum

Dual Action Buffer



- Dual Action Buffer with variable speed (0-3000 RPM) with spares and service support

Part No.	Size (mm)
Eq04	150mm

Backup Pads



- Premium quality backup pads in various sizes ranging from 3" to 7" in PSA and Velcro

Part No.	Size (mm)
1260111	6" x 6 Hole



DENTING & PAINTING



Transit Protection Tape

- Car paint Protection Film during transit of vehicle from the manufacturing plant to customer end
- This film is designed to stick to metal/plastic surface for 6 months without leaving residue on the the substrate surface

Product	Dimension
Transit Protection	As reqd.



Black Out Tape

- Black Out Tape or BOT tapes for substitute of paint on the window Frame/Center Pillar, etc. Several Car companies are using this product to reduce cost of painting on the window frame and center pillar

Product	Size
BOT Tape	Any Size

Duct Tape

- PP laminated Cloth Tape - Marine, construction, maintenance purpose, and abrasion resistance
- Bundling and coiling application, weathering

Product	Size
Dt170	Any Size

Diecut/Large Area Masking Solution

- Sumax is a leading manufacturer of masking solutions for two wheeler, bumper and white good companies, Diecuts available in fine line tape and masking tape

- We are directly supplying to all leading AOEM in India

Product	Size
BUM	Any Size



Foaming Dry Wash

- Foaming Dry Wash is a waterless cleaning process that reduces water consumption and support service department in adopting environmentally sustainable practices for the vehicle exterior and engine cleaning at workshops

Key Benefits

- Heavy duty cleaning-it is designed for cleaning stubborn dirt
- Water saving-It results in significant water savings
- Eco friendly products - 100% environment friendly

Key ingredients

- Foaming Dry Wash Concentrate - This is an internationally formulated Traffic Film Remover to clean vehicles completely without causing any harm to the vehicle and environment. This can be used on painted surface, windshield / glasses, rubber and vinyl (it won't stain or leave any residue)
- Foaming Gun - Available in Pneumatic and Manual variants. A highly efficient and ergonomically designed air foaming gun, easy to use with maximum foam generation and quick cleaning

Products & Accessories for Foaming Dry Wash

- Foaming Wash
- Vinyl Dresser
- Tar Remover
- Microfiber Cloth
- Wheel Brush
- Multi Surface Cleaner
- Rubber Conditioner & Protector
- Manual Foaming Gun
- Wash Mitt & Glass Squeeze
- Pneumatic Foaming Gun

Product	Size
WP011000	Foaming Wash
Ip021000	Multi Surface Cleaner
Ep051000	Vinyl Dresser
Ep041000	Rubber Conditioner & Protector
Eq05	Manual Foaming Gun
Eq06	Pneumatic Foaming Gun
SL 100500	Tar Remover
MFB40408	Microfiber Cloth
Cb01	Wash Mitt
Cb02	Wheel Brush
Cb03	Glass Squeeze



CARE & PROTECTION





CAR CARE

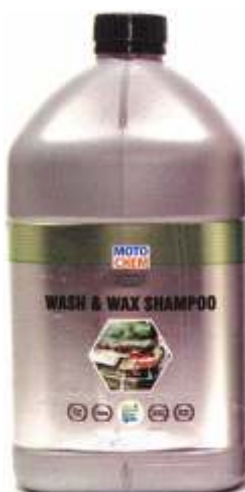


COCKPIT CARE

Description: Cockpit care has been specially developed to protect treat and enhance the appearance of extremely faded plastic components on the vehicle exterior. The high concentrate, cockpit care, provides the optimum treatment for plastic in a single process & environment friendly.

Application: Used especially for treating and protecting all plastics on the vehicle exterior.

PART NO	CONTENTS	UNITS IN CARTON
CC5M01	1 gallon	4



WASH & WAX SHAMPOO

Description: Cleans and protect in one go. For rapid paint care. Selected waxes and surfactant help to effortlessly remove dirt and protect the paint. No lime deposits. Eases leathering and is gentle on hands. By increasing the sheen, your cars appearances is noticeably improved. Paint is protected from weathering and other aggressive environmental influences. Regular application provides optimum results.

Application: Used especially for the gentle but thorough cleaning of paint surfaces to leave a sheen.

PART NO	CONTENTS	UNITS IN CARTON
WS5M07	1 gallon	4



TYRE SHINE

Description: Tyre shine has been specially developed to give the optimum treatment to rubber components and tyres. Rubber treatment cleans, protects and enhances the appearances of tyres and rubber components in a single process. Rubber treatment freshness the colours, keeps rubber components shining and elastic and prevents rubber door seals from freezing closed in water.

Application: Tyre shine has been developed for cleaning treating and protecting tyres.

PART NO	CONTENTS	UNITS IN CARTON
TSD40	500ML	20
TS5M40	1 gallon	4



CAR CARE



LIQUID POLISH

Description: Due to its special composition. Liquid Polish easily evens out light scratches and freshens up the paint surface in a single process. The original gloss is easily restored to a matt and weathered paintwork. After treatment, the paint surfaces clearly show increased resistances to harmful environments.

Application: Specially developed for coloured paints-in matt to weathered condition. The original gloss and appearance is easily restored to matt and weathered paintwork. Suitable for machine polishing. Not suitable for metallic paint.

PART NO	CONTENTS	UNITS IN CARTON
LT5M10	1 gallon	4



MULTI PURPOSE POLISH

Description: Multi Purpose polish is used universally for cleaning, preserving, care and protection. Multipurpose polish can be used for motor vehicles and hobbies and in the household and garden. This high concentration treatment preparation gives a deep, matt-silk sheen to even badly weathered plastic surfaces. Multipurpose polish repels dirt, dust and water and provides long-term protection.

Application: Due to its wide application, Multipurpose Polish can be used for rubber, plastics, leather, vinyl roofs and sealed wooden surfaces on vehicles as well as in the household and in the garden. For internal and external use.

PART NO	CONTENTS	UNITS IN CARTON
MP5M13	1 gallon	4



SPRAY WAX POLISH

Description: It contains fine abrasives, specially polymer resin and carnauba wax. It cleans and protects in one easy step. It is clear coat safe and very easy to use.

Application: Get rid of any sand particles by dusting or rinsing the car (please note, even though the product contains necessary lubricant, it is highly recommended that you take proper precautions to avoid entrapping any hard sand particles(s) to avoid any unintended damage to painted surfaces.) Then spray Dry Wash and apply it with wax applicator or clean cloth. Do not allow it to dry and wipe and apply it with wax applicator or clean cloth. Do not allow it to dry and wipe off to a clean shiny surface with a clean soft towel or micro-fiber. It provides a nice shine and good protection.

PART NO	CONTENTS	UNITS IN CARTON
SP5M	1 gallon	4



CARE & PROTECTION



WINDSCREEN CLEANER SUPER CONCENTRATE

Description: Windscreen Cleaner concentrate is a highly effective cleaning concentrate which has been specially formulated for vehicle windscreen washer systems as well for manual cleaning of vehicle windows.

Application: Cleaning Products for Automotive Glasses.

PART NO	CONTENTS	UNITS IN CARTON
WC5M59	1 Gallon	4



ANTI CORROSIVE TREATMENT WATER BASE GRAY

Description: The Product is made out of industrial hydro-carbon resin formed by heavy duty emulsion polymerization process. It is pigmented with anti corrosive pigments for better strength, opacity and water resistance properties. Ideally recommended as protection over steel or concrete structure as water.

Application: Stir the contents thoroughly well before use. The product is supplied in ready to use consistency. If required 5-10% good water can be added to suit application. After the painting operation is over all the mixing equipments, spray gun, hoses, pipeline and stirrer has to be cleaned with water. If not cleaned properly, the cured coating film may form bits in the coating during next day application.

PART NO	CONTENTS	UNITS IN CARTON
AWGM19	1 Ltr.	20



ANTI CORROSIVE TREATMENT WATER BASE BLACK

Description: The Product is made out of industrial hydro-carbon resin formed by heavy duty emulsion polymerization process. It is pigmented with anti corrosive pigmented for better strength, opacity and water resistance properties, ideally recommended as protection over steel or concrete structure as water.

Application: Stir the contents thoroughly well before use. The Product is supplied in ready to use consistency. If required 5-10% good water can be added to suit application. After the painting operation is over all the mixing equipments, spray gun, hoses, pipeline and stirrer has to be cleaned with water. If not cleaned properly, the cured coating film may form bits in the coating during next day application.

PART NO	CONTENTS	UNITS IN CARTON
ABBM02	1 Ltr.	20



MOTOR OILS





MOTOR OILS



PREMIUM GOLD

Description: is an all season, high-performance motor oil formulated using state of the art technology, selected base oils and a high additive content ensure optimum lubrication under extreme operating conditions and during long periods between oil changes.

Universal motor oil for gasoline and diesel engines (aspirated diesel engines and diesel engines with exhaust gas turbo charging with and without charge air cooler.

Application :
Ideally suited for modern gasoline and with multi-valve technology.

PART NO	CONTENTS	UNITS IN CARTON
PGMCC02	1 LITRE	20



MOTO GOLD - 20W40

Description: is an all season, high-performance motor oil formulated using state of the art technology, selected base oils and a high additive content ensure optimum lubrication under extreme operating conditions and during long periods between oil changes.

Universal motor oil for gasoline and diesel engines (aspirated diesel engines and diesel engines with exhaust gas turbo charging with and without charge air cooler.

Application :
Ideally suited for modern gasoline and with multi-valve technology.

PART NO	CONTENTS	UNITS IN CARTON
MOTM02	1 LITRE	20



POWER STERING

Description: Power Steering Fluid **"with Moto Technology"** is a premium mineral based, multipurpose power steering fluid designed for use in power steering units that specify conventional type Automatic Transmission Fluids (ATF's) i.e. It contains special anti-shudder additives not found in ATFs, that are designed to provide enhanced wear protection, longer service life and reduce noise in all conditions. It is also formulated with **"with Moto Technology"** to minimise leaks due to deteriorated or worn seals and gaskets.

Power Steering Fluid is designed for service re-fill or top-up in Australian, US, Japanese, European & Korean manufactured power steering units in cars and trucks that originally use an automatic transmission fluid.

PART NO	CONTENTS	UNITS IN CARTON
PO4M02	4 LITRE	4



MOTOR OILS

80W-90



Description: Is an all season, high-performance motor oil formulated using state of the art technology Selected bases oils and a high additive content ensure optimum lubrication under extreme operating conditions and during long periods between oil changes.

Application: Universal motor oil for gasoline and diesel engines (aspirated diesel engines and diesel engines with exhaust gas turbo charging with and without charge air cooler)

PART NO	CONTENTS	UNITS IN CARTON
GOM01	1 LITRE	20

20W-50



Description: Is an all season, high-performance motor oil formulated using state of the art technology Selected bases oils and a high additive content ensure optimum lubrication under extreme operating conditions and during long periods between oil changes.

Application: Universal motor oil for gasoline and diesel engines (aspirated diesel engines and diesel engines with exhaust gas turbo charging with and without charge air cooler)

PART NO	CONTENTS	UNITS IN CARTON
MGM03	1 LITRE	20

RADIATOR COOLANT



Description: The engine of a car produces high levels of heat when it is running and the fluids flowing through the radiator system help to draw some of the heat away from the engine so it doesn't over-heat and in colder weather it prevents the water in the radiator system from freezing.

Application: The coolant should be used in a 1/2 mix with the water in your radiator to give the optimum boiling or freeze point protection you need for your engine.

Usage: A Coolant will help to remove the heat from the engine, while preventing rust build up in the radiator system. It protects water in the radiator system against freezing, and increases the boiling point of the water in the radiator system. The Coolant also keeps the levels of evaporation to a minimum since Antifreeze doesn't evaporate like water does.

PART NO	CONTENTS	UNITS IN CARTON
RCM50	1 LITRE	20

15W-40



Description: : Modern top class low-friction engine oil for all-season use in gasoline and diesel engines without diesel particulate filters. The combination of innovative base oils-based on synthesis technology and the latest additive technology-guarantees and engine oil that reduces oil and fuel consumption and that ensures fast lubrication of the engine. Depending on the manufacturers instructions, oil change intervals maximum.

Application: Ideally suited for modern gasoline and petrol engines with multi-valve technology. Turbo charges and with or without charges air cooling. Especially suitable where there are long intervals between changes and heavy duty engine requirements. The operating instructions of the vehicle and engine manufactures must be followed.

PART NO	CONTENTS	UNITS
MODMMMD14	3.5 LITRE	4

10W-40



Description: : Modern top class low-friction engine oil for all-season use in gasoline and diesel engines without diesel particulate filters. The combination of innovative base oils-based on synthesis technology and the latest additive technology-guarantees and engine oil that reduces oil and fuel consumption and that ensures fast lubrication of the engine. Depending on the manufacturers instructions, oil change intervals maximum.

Application: Ideally suited for modern gasoline and petrol engines with multi-valve technology. Turbo charges and with or without charges air cooling. Especially suitable where there are long intervals between changes and heavy duty engine requirements.

PART NO	CONTENTS	UNITS
MOSMMMD11	3.5 LITRE	4

5W-30



Description: :Ideally suited for modern gasoline and petrol engines with multi-valve technology. Turbo charges and with or without charges air cooling. Especially suitable where there are long intervals between changes and heavy duty engine requirements.

Application: The operating instructions of the vehicle and engine manufactures must be followed.

PART NO	CONTENTS	UNITS IN CARTON
MOPV05	5 LITRE	4



MOTOR OILS



FULLY SYNTHETIC OIL 5W-40

Description: Fully Synthetic oil 5W-40 is a fully synthetic, high performance, low –friction engine oil designed for year-round use in passenger motor vehicle engines. Optimum high performance for multi-valve and turbo charged engines. The synthetic base oils and high quality additive components satisfy and greatly exceed the requirements of the most state –of the –art engine designs.

Application: Optimum for modern petrol engines with multi-valve technology and turbo charging. Especially suitable where there are long intervals between oil changes and heavy duty engine requirements.

PART NO	CONTENTS	UNITS IN CARTON
MOSMMMD11	3.5 Ltr.	4



SEMI SYNTHETIC OIL 5W-40

Description: Optimum for pumped –jet injection spot particular filters meeting manufactures requirement and other diesel engines with and without exhaust gas turbo charging. Especially suitable where there are long intervals between oil changes and heavy duty engine requirement. The operating instruction of the vehicle and engine manufacture must be followed.

Application: Optimum for pumped –jet injection systems, soot particular filters meeting manufacture requirement and other diesel engines with and without exhaust gas turbo charging. Especially suitable where there are long intervals between oil changes and heavy duty engine requirement. The operating instruction of the vehicle and engine manufactures must be followed.

PART NO	CONTENTS	UNITS IN CARTON
MOSMMMD11	4 Ltr.	4



FULLY SYNTHETIC OIL 0W-40

Description: FSO 0W-40 is modern, fully synthetic, low friction motor oil for all season use. The combination of unconventional synthetic –based oils using advanced additive technology ensures low viscosity and high shear stability for the motor oil and reliably prevents the formation of deposits, reducing frictional loss in the engine and providing the optimal protection from wear. FSO 0W-40 is recommended for gasoline and Diesel engines, including engines with turbo charges and catalytic converters.

Application: Optimal for modern passenger vehicles with gasoline and with gasoline and diesel engines with and without turbo charges and with and without charge air cooling. Especially suitable where there are long intervals between oil changes and heavy duty engine requirements. The operating instructions of the vehicle and engine manufactures must be followed.

PART NO	CONTENTS	UNITS IN CARTON
MTFS3MD13	3.5 Ltr.	4



OILS

DOT 4



Description: ATF is a hydraulic fluid for automatic transmission and hydraulic clutches for which a Type automatic transmission fluid has been specified. ATF also guarantees perfect operation of hydraulic transmission even under extreme running conditions and when exposed to large temperature fluctuations. Numerous vehicle manufacturers use ATF as a hydraulic fluid for, e.g. power steering systems which have to work under the severest running conditions.

Good for all Dot 4 brake systems. For ABS, disc & drum brake systems. Dot 4 motor vehicle brake fluid. Complies with federal motor vehicle safety standards. Motochem brand Synthetic Brake Fluids designed for safe operation of today's modern brake systems.

PART NO	CONTENTS	UNITS IN CARTON
BFOL04	50ML	30
BFOCCL04	250ML	20



Multi Premium Grease

Description: Specially designed for general Chassis Lubrication of automotive vehicles including heavy duty commercial vehicles and farm equipments highly water resistant adhesive type grease can be also use for water pumps and wheel bearings operating at moderate temperature

PART NO	CONTENTS	UNITS IN CARTON
MPGD14	500GM	20
MGV01	5 KG	4



BATTERY WATER

For Automotive Batteries & Industrial Use
Helps reduce corrosion and scale formation
Do not store in direct sunlight

PART NO	CONTENTS	UNITS IN CARTON
DWV08	5 litre	4



EQUIPMENTS



AIR VENTURI TOOLS

Mobile Part Washer

Part No. **ML-WH700MF**

The system will increase your working efficiency in its unique design.

Large filter installed.

Easy to bring to work place.

Plastic material provides best resistance to water based solvent.



AIR VENTURI TOOLS

Cleaning Foam Cleaner

Part No. **ML-AF-2A 2L**

Best for car washing job.

2L capacity.

Uses standard workshop air supply.



COOLING SYSTEMS TOOLS

Portable Refractometer

Part No. **ML-SC 414**

This portable refractometer is a precision instrument designed to measure engine coolant, battery acid and windscreen washer fluid.

Remember to use the appropriate scale when measuring the above fluids.

Tests: Battery fluid antifreeze screen wash.



COOLING SYSTEMS TOOLS

Digital Refractometer

Part No. **ML-SC-4148**

This digital refractometer is a precision instrument designed to measure engine coolant, battery acid and windscreen washer fluid.

The Prism is made of optical glass and is susceptible to scratches, do not apply any rough or abrasive material and take care when cleaning the prism.



COOLING SYSTEMS TOOLS

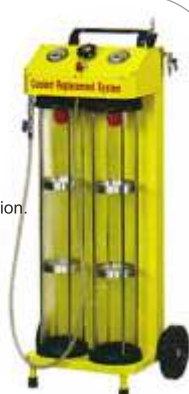
Radiator Coolant Replacement System

Part No. **ML-SC 515**

Pneumatic design provides simple and easy extraction.

Transparent twin cylinder, easy to monitor fluid separation process.

Also for fluid extraction application.



OIL FILTER TOOLS

Aluminum Oil Filter Wrench Set

Part No. **ML-WH-299**

Magnet Inside

Prevents Filter from dropping.



CARBON CLEANING /ENGINE FLUSH

Carbon Cleaning Canister

Part No. **ML-EC-900K**

The system will increase your working efficiency in its unique design.

Large filter installed.

Easy to bring to work place

Plastic material provides best resistance to water based solvent.



CARBON CLEANING /ENGINE FLUSH

Carbon Cleaning Cannister Manifold & Throttle

Part No. **ML-EC-900G**

Uses standard workshop air supply.

Best for car washing Job

2L Capacity.



CARBON CLEANING /ENGINE FLUSH

Carbon Cleaning Cannister Manifold & Throttle

Part No. **ML-EC-900M**

- This Portable refractometer is a precision instrument designed to measure engine coolant, battery acid and windscreen washer fluid.
- Remember to use the appropriate scale when measuring the above fluids.
- Tests: Battery fluid antifreeze.



CARBON CLEANING /ENGINE FLUSH

Injection Cleaning System

Part No. **ML-EC-900A**

- This Digital refractometer is a precision instrument designed to measure engine coolant, battery acid and windscreen washer fluid.
- The prism is made of optical glass and is susceptible to scratches, do not apply any rough or abrasive material and take care when cleaning the prism.



CARBON CLEANING /ENGINE FLUSH

V-Type Spray Nozzle

Part NO: **ML-EC-900G3**

- Pneumatic design provides simple and easy extraction.
- Transparent twin cylinder, easy to monitor fluid separation process.



CARBON CLEANING /ENGINE FLUSH

Spray Nozzle with Fix Lock

Part No. **ML-EC220028**



CARBON CLEANING/ ENGINE FLUSH

S-Type Spray Nozzle (optional)

Part No. **ML-EC-900G1**

- Magnet Inside
- Prevents filters from dropping.



WASTE OIL HANDLING

50l waste Oil Drainer

Part No. **ML-T-50D**

- Composite lid and drum with 50 ltr reservoir and drain pan on telescopic post.
- Gravity drain using tap on rear of unit, Includes visible Full Drum device.
- Includes large diameter drain pan insert and heavy duty mesh for draining oil filters.
- Made from high density Polyethylene.



WASTE OIL HANDLING

Portable Bearing Packer

Part No. **ML-TG-95**

- Packs 50 to 65 bearings with one grease filling.
- Apply manual pressure to flush and pack bearing with grease.
- Includes dust cover.



WASTE OIL HANDLING

Air Gear Pump Oil Extractor

Part No. **ML-T-80AG-80L**

- Oil Level sight tube
- Telescopic tube adjusts from 1200mm-1950mm.
- Extra large diameter drains pan and removable filter.
- Safe pressure depletion of waste oil.
- No lifting, pouring or spillage.
- Gear pump fitted to extra oil via the dipstick.
- For use on gearbox oil, automatic transmission oil and in motor cycle. Hi gear pumps design.





EQUIPMENTS

BRAKE SERVICE

Pressure Brake Bleeder

Part No. **ML-WH505**

- Air operated pressure brake bleeder
- Suitable for clutch bleed as well as brake bleed.
- 5litre capacity tank.
- Complete with WH505C master cylinder adaptor kit.



BRAKE SERVICE

Brake Fluid Tester

Part No. **ML-WH-509**

- Electronic circuit design to maintain its accuracy in the event of power shortage.
- High-tech brake fluid sensor examines the quality of the brake fluid.
- Easy to operate. Perfectly fits the hand.
- The tester examines the quality of the brake fluid. With blow case.



OIL DISPENSER

Pressure Fluid Dispenser

Part No. **ML-AC-5A 40L**

- Maneuverable oil dispensing units for convenient.
- Safe oil handling in the workshop.
- Suitable for any vehicles.
- Easy to operate and user friendly.



TRANSMISSION

Automatic ATF Exchanger

Part No. **ML-AT-1200**

- AT-1200A is a fully automatic machine, air powered, design unit.
- Isothermal Exchange.
- Flow regular (automatically redirects flow)
- Auxiliary exchange.
- Auto by Pass.
- Complete Fitting Set.



TRANSMISSION

Transmission Filling System

Part No. **ML-K-10A**

- Composite lid and drum with 50 ltr reservoir and drain pan on telescopic post.
- Gravity drain using tap on rear of unit .Includes visible Full Drum device.
- Includes large diameter drain pan insert and heavy duty mesh for draining oil filters.
- Made from high density Polyethylene.



PART CLEANER /HYEGINE

Brake Disc Lining Cleaning System

Part No. **ML-WH0L**

- Removable filter installed to recycle waste water/detergent.
- Extra large diameter drains pan & removable filter grid.
- Mobile design to ensure best maneuverability in workshop.
- Quick loosen and remove dried oil, grease and dirt from the brake.
- Clean hazardous dust safely from all types of brakes.



PART CLEANER /HYEGINE

Cleaning Foam Sprayer

Part No. **ML-AF90S**

- Caster with brake.
- Spray gun-aluminum alloy.
- Pressure gauge-stainless steel.
- Mainbody-stainless steel 90L
- Connecting to compressor, equipped with 10M long spiral shaped hose.



PART CLEANER /HYEGINE

Mobile Parts Washer

Part No. **ML-WH-700MD**

- The system will increase your working efficiency with its unique design.
- Large filter installed.





EQUIPMENTS

POWER STEERING

Power Steering Flushing System

Part No. **ML-PC-500**

- Power steering Flush is fast-an average service takes less than ten minutes from start to finish.
- Power Steering Flush is simple to operate –with easy to follow directions on the manual.
- Power Steering Flush –has sight tubes that provide dramatic visual comparison during fluid transfer.
- Power Steering Flush is profitable-More premium services can be performed in less time. Customer satisfaction will be high, leading to more referrals, maximizing profit levels.
- Maneuverable-rolls easily in tight spaces 0 simple-No tools required E durable-all metal case.
- Easy-instruction printed on lid.
- Convenient –no pits, lifts or ramps.



POWER STEERING

Engine Oil Flushing System.

Part No. **ML-WH600**

- From the first mile a vehicle is driven, heat with in the engine begins breaking down the oil. The chemical reaction that occurs creates varnish, then varnish and other contaminants mix with condensation in the engine to form sludge. It's not long before the passages that cry the vital engine oil are restricted.
- As varnish and sludge build up, friction increases. Timing is affected .Power is lost and fuel economy deteriorates. Even worse, the contamination begins to clog the oil pick –up screen –a major cause of engine failure.
- The Flushing process removes the varnish, carbon, and sludge deposits that regular oil changes can't touch. The unique Flushing cleaner actually dissolves the molecular bond between contaminants and the internal engine parts.



WASTE OIL HANDLING

Waste Oil Drainer

Part No. **ML-T-60L**

- Waste oil mobile reservoirs to be used for motor and gear oil collection.
- Drainers can be used under vehicle lifts or inside lubrication pit.
- Large handle for easy maneuverability.
- Two brake wheels (03") and two casters (03")
- Extra large drain bowl and Adjustable collecting bowl for the convenient and safe collection.
- Venturi design.



WASTE OIL HANDLING

Waste Oil Drainer (Auto Check Valve)

Part No. **ML-T-80C-80L**

- Waste oil mobile reservoirs to be used for motor and gear oil collection.
- Drainers can be used under vehicle lifts or inside lubrication pit.
- Large handle for easy maneuverability.
- Two brake wheels (03") and two casters (03").
- Extra large drain bowl and Adjustable collecting bowl for the convenient and safe collection.





EQUIPMENTS

BODY COATING

Anti Corrosive Spray Gun

Part No. **ML-8020**

- Moto lube Texture gun is suitable for applying 1 liter of underbody Anti corrosive coating product and can be used where it is important to reinstate the original surface texture. Different surface texture can be produced with the adjustable with the adjustable spray nozzle.



BRAKE SERVICE

Pressure Brake Bleeder

Part No. **ML-WH-505D**

- Air operated pressure brake bleeder.
- Suitable for clutch bled as well as brake bleed.
- 5 liter capacity tank.
- Complete with WH-505C master cylinder adaptor kit.



PLATIC AUTO BODY REPAIR

Hot Stabler for Plastic Auto Body Repair

Part No. **ML-009**

- Preparing the plastic: Make sure the area to be stabled is free paint and clean. Remove any oils or residues from the plastics surfaces.
- Getting Started: Plug in control box and turn on .Carefully insert desired staple into one of the three possible positions in the end the stapler without depressing the power button on the handle. Once pressed to the bottom of the hole, the unit is ready for use.
- Setting the temperature: Turn the control dial to the second or third position, unless very low heat levels are desired. These two positions satisfy most stapling applications.
- Use: Lay staple over the desired location and apply gentle pressure. Push the button on the handle, then release once the staple is at the desired depth. Allow to cool slightly .Pull back and the staple will remain in the plastic. Clip off the staple with the supplied diagonal cutter.
- Caution: When clipping off the staple prongs wear eye protection and cup your hand over the staple to prevent the clipped wire from becoming a projectile.



Technical Parameters:

Power Supply: 1ph110V or 230V50/60HZ

Output Voltage: 0.8-1.2 V Packing: Plastic box with cartoon Size: 40 *19*19cm Gross weight: 4.5 kg cable plug style can be ordered.



MARINE PRODUCTS



Oil Spill Dispersant

Oil Spill Dispersant is a bio-degradable Emulsifier based product with excellent efficiency and low toxicity with superior penetration. This product is specially designed for complete emulsification of oil by which subsequent dispersion takes place.

Advantages:

- ❖ Fully biodegradable and having low toxicity.
- ❖ Self-life of 5 Years (FROM MANUFACTURING DATE).
- ❖ HIGH-EMULSIFICATION rate converts hydrocarbons particle into very fine emulsions.
- ❖ Effective on oil spills at platform, during loading or discharging of cargo or bunkers.
- ❖ 1 Liter of Oil Spills Dispersant is enough to treat approx 20-30 sq meters of dispersed oil.
- ❖ Suitable for Crude/Bitumen/Residual/Diesel/Kerosene, White spirit & Lube oils etc.
- ❖ Ready to use product.
- ❖ For cleaning of spills on Deck, Ships side, Piers, Wharfs, etc. where allowed.

Application Areas:

- ❖ Oil spills at sea
- ❖ Oil on beaches and shore line
- ❖ Oil spill on deck (ships, transport vessels)
- ❖ Cargo handling areas,
- ❖ Shipping harbours and ports
- ❖ Automobile Assembly Lines
- ❖ Industrial Manufacturing units and factories
- ❖ Repair Workshops and Garages

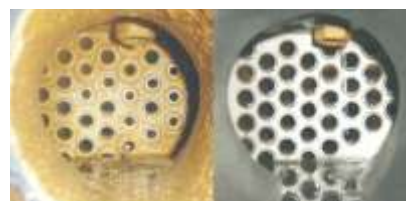


Descaling Liquid (Scale Remover)

Scales are very damaging to the boiler because they interfere with the heat transfer and can lead to overheating and eventually, boiler rupture. To increase the usable life of cleaned equipment, it is a safe and effective way to remove scale deposits, from all types of water cooled and water-heated equipment. This descaler specifically formulated and developed to rapidly clean mineral scale from passages in water-cooled or heated equipment.

Advantages:

- ❖ You do not have to heat Descaling Liquid.
- ❖ Fast and effective scale remover.
- ❖ It does not contain toxic cresols or other tar oils that require spill loss or disposal.
- ❖ It is safer for the employees to use than any other acid based products.
- ❖ Soft on ferrous metals.
- ❖ Equipment can also be cleaned without any down time (cleaning on the run).
- ❖ Cleans down to the original surface without pitting.
- ❖ It improves Plant Efficiency, Lowers Cost, Conserves Energy, Decreases Down-Time.
- ❖ Removing the scale build-up, allows your equipment to operate more efficiently with less down time.
- ❖ It is a safe, economical concentrated chemical to be used on the waterside of heat transfer equipment.
- ❖ Your equipment will be cleaned in only hours without disassembling any part of the equipment.
- ❖ Removes water scale & rust from boilers/diesel engine & other cooling system, as well as from condensers, evaporators, & heat exchangers, etc.
- ❖ It will extend the usable life of your equipment, especially when used as a part of a regularly scheduled preventative maintenance program.



Motor Winding Cleaner

Motor Winding Cleaner is a clear water white safety solvent specifically formulated for the cleaning of electrical motors and windings. It helps in cleaning of electrical equipment and components, particularly motors, windings or armatures

Advantages:

- ❖ Cleans effectively by dissolving grease and carbonised soils.
- ❖ Safe to use on the varnished windings,
- ❖ Not highly flammable
- ❖ Has low toxicity even when used for extended periods of time.
- ❖ Does not evaporate so quickly, hence not very expensive to use.
- ❖ Easily dried out by baking and leaves no oily deposits once it is dry.
- ❖ It has a flash point higher than 80 degrees Centigrade thus reducing considerably the danger of fire when compared to petrol or benzene.
- ❖ It can be used as a dip in a tank for soak cleaning of armatures, windings and other components or by spraying, brushing or wiping.

ADDITIVES • CAR CARE PRODUCTS • LUBRICANTS • TECHNICAL AEROSOLS • EQUIPMENTS



Moto Technology Pvt. Ltd.

204, New Apollo Estate,
Andheri (E), Mumbai - 4000 69. INDIA

Tel. : 022-2839 3131

Email : mototechnology@motochem.in

www.motochem.in